



rastone
pietre e marmi

pietraeco

ECOCOLLA

ECOCOLLA is specifically designed as adhesive for laying of PIETRAECO manufactured stone, for inside and outside use. ECOCOLLA is an improved cement-based adhesive, with limited slipping, extended open time and high thixotropy and it is available in 25 kg bags, in WHITE and GREY colours.

ECOCOLLA, when mixed with water, becomes a soft mixing that is very easy to install. If it is combined with glass fibre mesh ECORETE, it is also a suitable adhesive to make reinforced concrete skim coat consolidations on unstable bottoms or for supporting reinforcement on external thermal insulation.



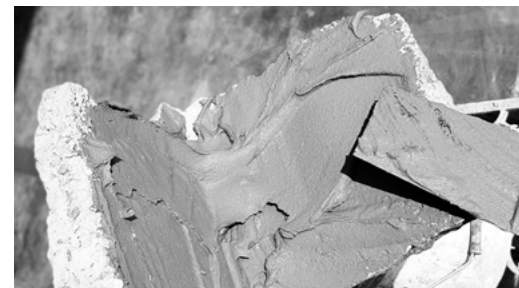
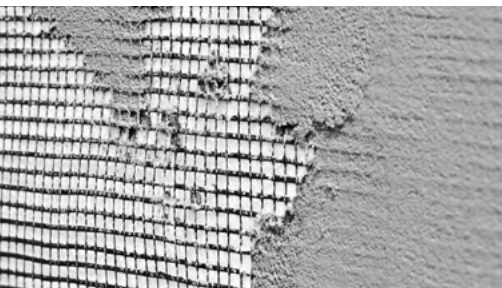
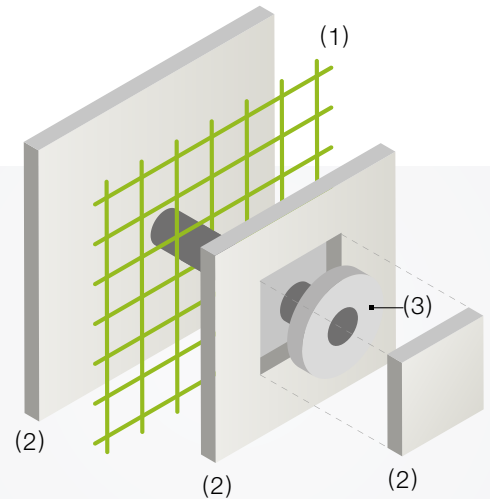
WHITE



GREY

ECORETE

ECORETE is a fiberglass net with 16.7x16.1 cm mesh, with antialkaline coating treatment, with specific weight higher than 300 g/m². It is suitable for non-solid laying bases and with a mechanical strength that is not sufficient to support PIETRAECO manufactured stone covering. ECORETE (1) has to be drowned in a double skin coat of ECOCOLLA (2) and properly fixed with plugs (3), 4 to 7 pieces per square meter may be required according to the product selected and the substrate it will be installed.





ECOCOLLA

How to prepare the installation base

Basic conditions assessment

It is essential to carefully assess the specific conditions of the installation base in order to obtain the best results and avoid problems that could occur because of flaws in the base. The installer is also required to provide state-of-the-art quality work to customers, as established by the applicable construction laws.

We therefore recommend making sure that you apply PIETRAECO on suitable surfaces built in compliance with construction quality standards. In particular, the installation base should be solid, clean, without the presence of elements that may affect its stability.

Assess the consistency of the installation base

In assessing where and how to apply the PIETRAECO facing, remember the following surface texture requirement: it is essential that the surface can support a weight that ranges from 20 to 80 Kg/m². This weight is the result of a mix consisting of PIETRAECO (from 10 to 50 Kg), ECOCOLLA (from 5 to 10 kg) and ECOSTUCCO (from 5 to 20 kg).

You then need to make sure that the glue is applied to a surface with appropriate anchoring properties, i.e. capable of withstanding structural stress between the several elements, which is inevitable.

Preparation of ECOCOLLA

Preparation

In a bucket containing about 4.5 litres of water, slowly pour and stir a 25 kg bag of ECOCOLLA. Mix on low speed and then faster until you obtain a homogeneous mixture; then add the water and mix at low speed (you will need 5-5.5 litres of water for a total 25 kg). Let the mixture rest for about 3 minutes and then proceed to apply it on the surface after mixing again a little. Do not prepare the mixture without the aid of a mechanical stirrer.

Special precautions

- Do not use with temperatures below +5 °C and above +35 °C.
- If the temperatures are especially high, check that the surface does not exceed the critical values for the adhesive and that the water doesn't evaporate too fast from the glue. If so, proceed by wetting the installation surface first with water and if necessary, even the back of the manufactured stone PIETRAECO, then when the materials are dry, proceed with the installation.
- If the temperature is too cold, close to zero or with risk of frost, suspend the installation and cover the treated surface.
- Do not add water to speed-up the installation process while using the product.
- Do not add other material that is not included in the data sheet.
- Comply with any structural joints.

AVERAGE CONSUMPTION OF ECOCOLLA (Installation with double spreading)

STONE installation depending
on the laying surface

7-9 kg/m²

BRICK installation depending
on the thickness of the brick

3-5 kg/m²

Corner STONE installation

3-4 kg/lm

Corner BRICK installation

2 kg/lm